

Difference in Estrous and Estrus

- | | |
|--|---|
| <ul style="list-style-type: none">• Cycle-to-cycle• Adjective | <ul style="list-style-type: none">• Standing heat• period of sexual receptivity• Noun |
|--|---|

% of time in the follicular stage? Luteal stage?

- | | |
|---|--|
| <p>20%</p> <ul style="list-style-type: none">• period from regression of CL to ovulation; under stim. of E_2 | <p>80%</p> <ul style="list-style-type: none">• period from ovulation to CL regression; under stim. of P_4 |
|---|--|

What is the primary ovarian structure during the luteal phase?

• Corpus Luteum

Since we know the dominant ovarian structure during the luteal phase is the CL, what could the dominant ovarian steroid hormone be?

• Progesterone (P_4)

What does it mean for horses to be long day breeders?

- They need an increased day length meaning ~16hrs of daylight and 8hrs of dark for at least 60 days.

What does it mean for ewes and does to be short day breeders?

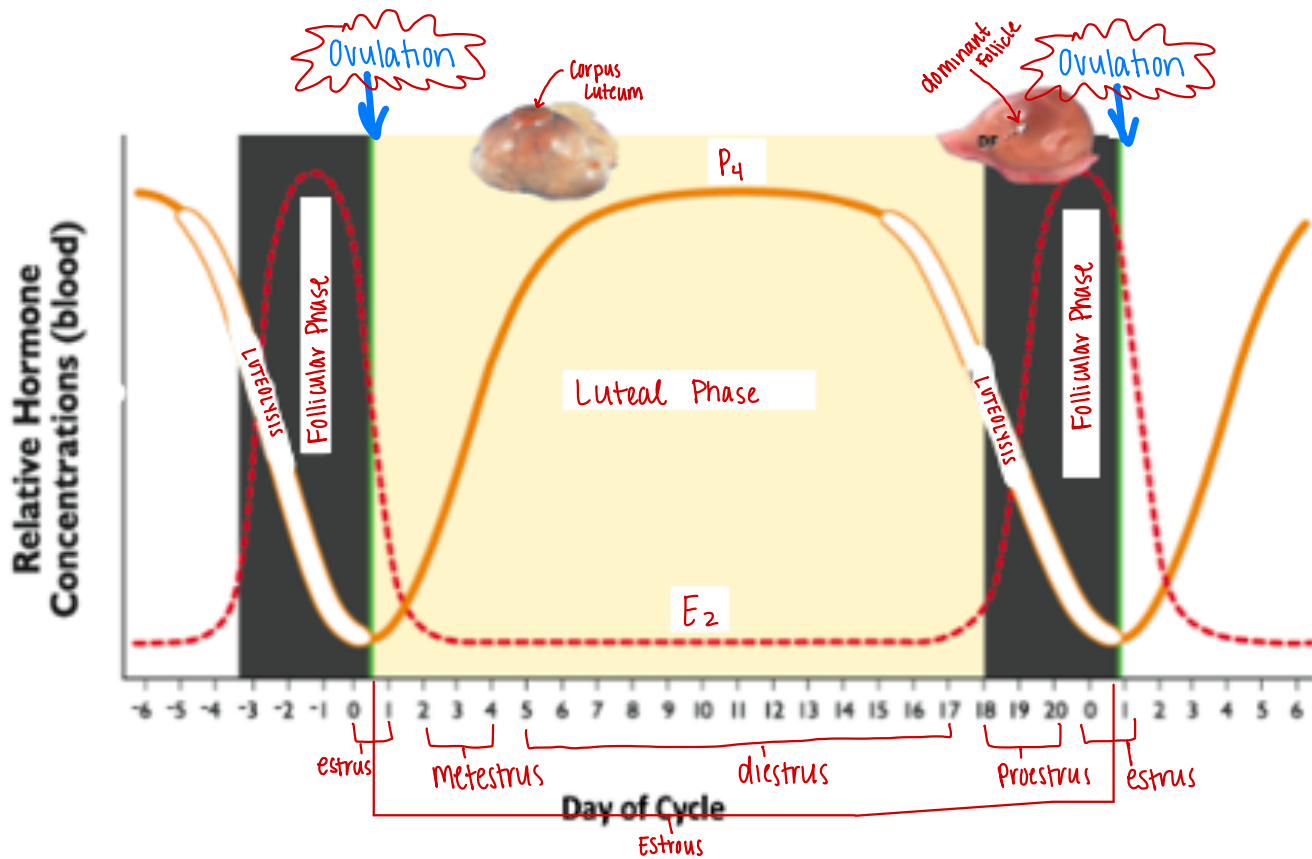
- They need a decreased day length meaning ~8hrs of daylight + 16hrs of dark for at least 60 days.

Explain what happens to the hormone profile of a cow while she is gestating:

- After ovulation, both P_4 & E_2 are low for about 5 days (due to the CH transforming into a CL) when the CL is fully developed P_4 spikes and soon her body recognizes she's pregnant and P_4 plateaus then an increase of E_2 occurs and shortly after both E_2 & P_4 happen to drop causing parturition.

Label the chart with the following:

Luteal Phase, Follicular Phase, Metestrus, Estrus, Proestrus, Diestrus, Ovulation, Progesterone, Estrogen, Corpus Luteum, Dominant Follicle, Estrous



Determine the type and length of the following female's cycle and lastly, length of pregnancy?

Cow: Polyestrus; 21 days; ~282 days

Ewe: Seasonal polyestrus; 17 days; ~148 days (fall)

Sow: Polyestrus; 21 days; ~115 days

Mare: Seasonal polyestrus; 21 days; ~335 days (spring)

When does ovulation occur for the following females?

Cow: 11 hrs after end of estrus

Ewe: Near end of estrus

Sow: 35-45 hrs after start of estrus

Mare: 3-6 days of estrus (1-2 days before end)
of estrus

★ Please note :

→ Length of estrus:

Cow: 18 hrs

Ewe: 29 hrs

Sow: 48-72 hrs

Mare: 4-8 days

★ Pay close attention to charts & graphs (especially repeated ones in notes) because they are great study material. ★